

Services for ADMINISTRATIONS
WI-PIE backbone will host the RUPAR regional network, a high-speed system that connects the 2200 public bodies of Piemonte and offers on line services, thus developing genuine technological models to share with other Administrations and companies.

Services for CITIZENS
In collaboration with the Mountain Department of Regione Piemonte, WI-PIE is cabling several alpine refuges and mountain communities for the support of the tourism sector. Furthermore, thanks to the broadband it will be possible to improve many services already existing.

Services for COMPANIES
WI-PIE stimulates the territory: increasing the availability of broadband, the market policies of ICT operators, are competitive for the less profitable areas as well. WI-PIE has created on line training services that employ the e-learning platform to offer updating in the field of environmental risk and creates new business models, such as the first Italian network of "digital halls" for movies and shows (theatre, music, opera).

Services for COMPANIES
The exploitation of broadband potential by joint public/private initiatives has led to the creation of new services using technologically innovative communication instruments.

SERVICES

KEY PLAYERS

The success of the programme depends on the **synergy among the parties involved** and the way in which they successfully work together to multiply the territory's resources.


A permanent **workgroup** is already operational to ensure WI-PIE strategic and operating management and coordinate relations between all parties involved in the development of the new regional network model.


The programme sees the direct involvement of:

 REGIONE PIEMONTE
Regional Authority promoting body that also plays a coordinating role

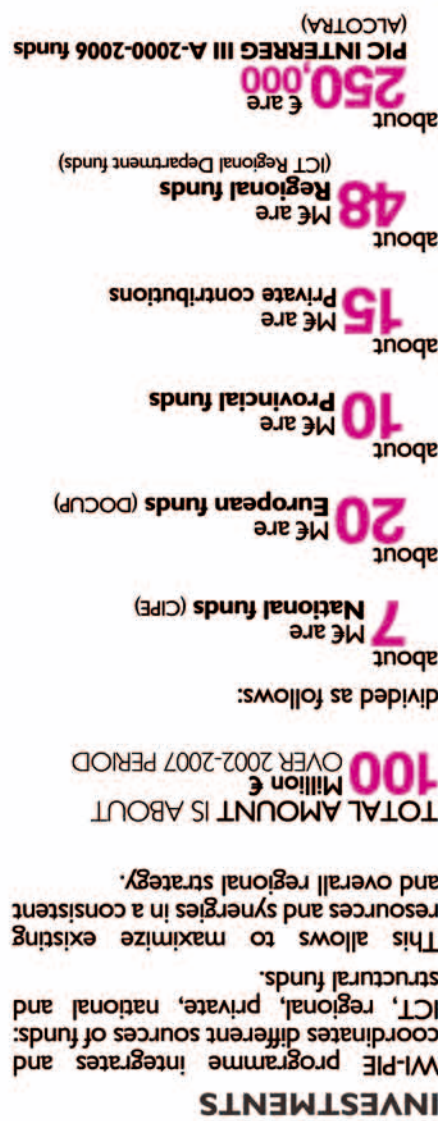
 CSI PIEMONTE
Consortium for Information Systems responsible for the technical implementation of projects

 TORINO PIEMONTE INTERNET EXCHANGE
consortium of private and public operators in the ICT market and responsible for relations with the business world

 CSP
ICT innovation responsible for the link between research bodies, schools and the academic world

 IRES
Economic and Social Research Institute a regional public institute, although functionally autonomous and responsible for managing the ICT Observatory

OVERALL SYSTEM COMPETITIVENESS



The network for each and all of us

www.wi-pie.eu

Secretary's Office contact details:
tel. +39 011 432.3119
fax +39 011 432.2252

e-mail:
segreteria.wi-pie@regione.piemonte.it

SOCIAL AND CULTURAL DEVELOPMENT

GOALS

This initiative has long-term objectives:

CONNECTING DISADVANTAGED AREAS OF THE TERRITORY, thus increasing the availability of broadband and new services to everyone

PROMOTING THE SOCIAL AND CULTURAL DEVELOPMENT OF THE REGION, tackling the digital divide and raising Piemonte standing internationally in terms of ICT

INCREASING THE COMPETITIVENESS OF THE LOCAL MANUFACTURING SYSTEM by creating new market opportunities and encouraging new start-ups

FACILITATING TECHNOLOGY TRANSFER among the worlds of research, schools and business

CREATING AN INTERNATIONAL NETWORK with various interlocutors of the neighbouring regions and Countries, optimising actions and communications



WI-PIE

WI-PIE is a multi-year permanent programme promoted and supported by Piemonte regional administration, that aims at equipping the region with a widespread broadband connection system and innovative services.

The first WI-PIE goal, reached in November 2006, was the activation of the **multi-service backbone**, a "digital highway" that guarantees widespread effective coverage for all users (local institutions, companies and citizens) thanks to extensions made to MANs (Metropolitan Area Networks) and wireless links.

By 2008 WI-PIE will extend the broadband access to 96% of the regional population with a telephone line and will employ wireless solutions (satellite and Wi-Fi) in order to reach the remaining 4%, about 300 villages that cannot count on broadband connections because of their geographic location.

The distinctiveness of **WI-PIE PROGRAMME** is its capacity of building public/private partnership, in order to create new market opportunities according to a subsidiarity policy, thus ensuring an integrated regional plan able to respond to local needs.

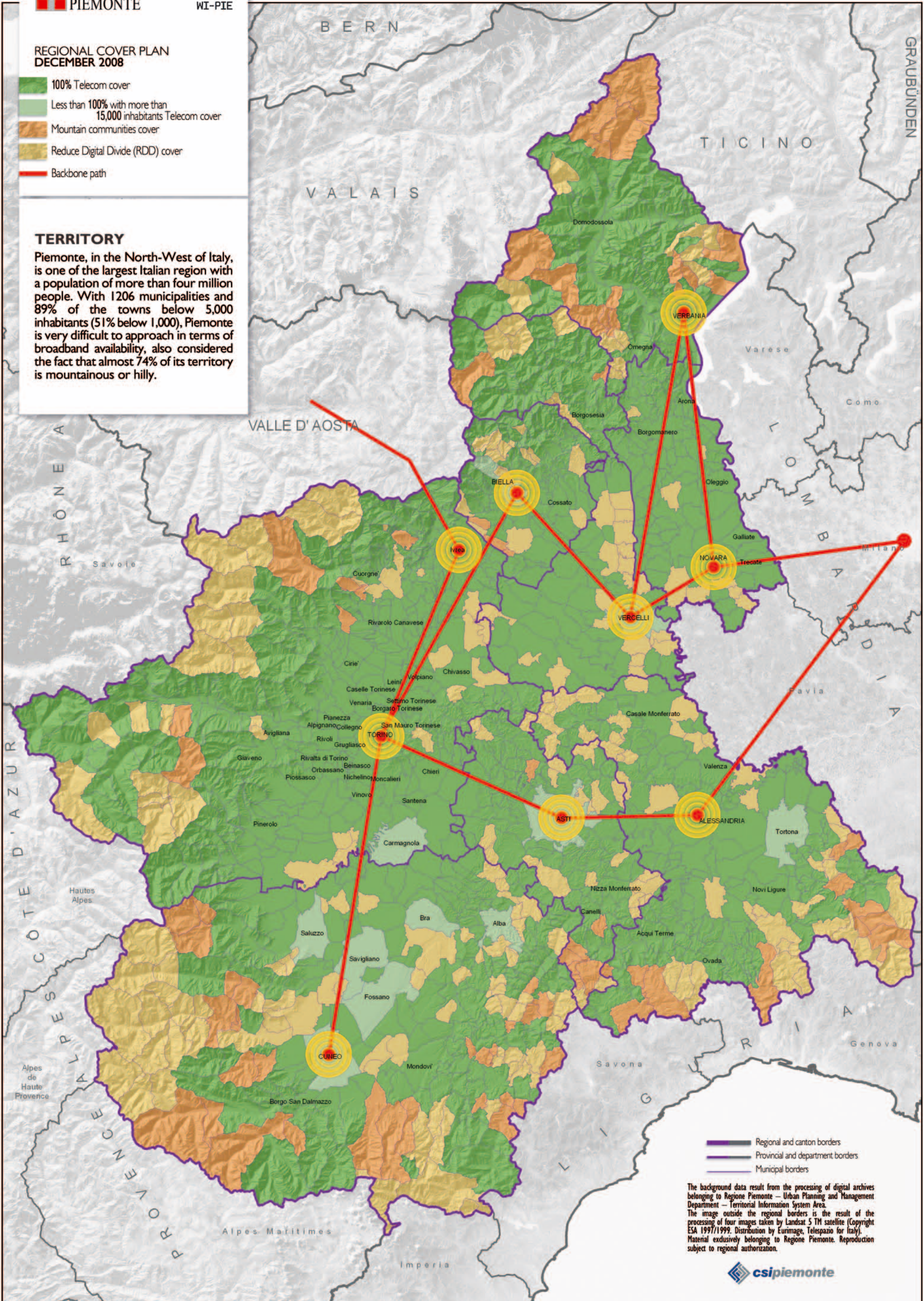
BROADBAND FOR ALL

REGIONAL COVER PLAN
DECEMBER 2008

- 100% Telecom cover
- Less than 100% with more than 15,000 inhabitants Telecom cover
- Mountain communities cover
- Reduce Digital Divide (RDD) cover
- Backbone path

TERRITORY

Piemonte, in the North-West of Italy, is one of the largest Italian region with a population of more than four million people. With 1206 municipalities and 89% of the towns below 5,000 inhabitants (51% below 1,000), Piemonte is very difficult to approach in terms of broadband availability, also considered the fact that almost 74% of its territory is mountainous or hilly.



— Regional and canton borders
 — Provincial and department borders
 — Municipal borders

The background data result from the processing of digital archives belonging to Regione Piemonte – Urban Planning and Management Department – Territorial Information System Area.
 The image outside the regional borders is the result of the processing of four images taken by Landsat 5 TM satellite (Copyright ESA 1997/1999. Distribution by Eurimage, Telespazio for Italy).
 Material exclusively belonging to Regione Piemonte. Reproduction subject to regional authorization.

